

L.S.Q. G. NEWSLETTER

Lee's Summit Quilter's Guild, established 1983

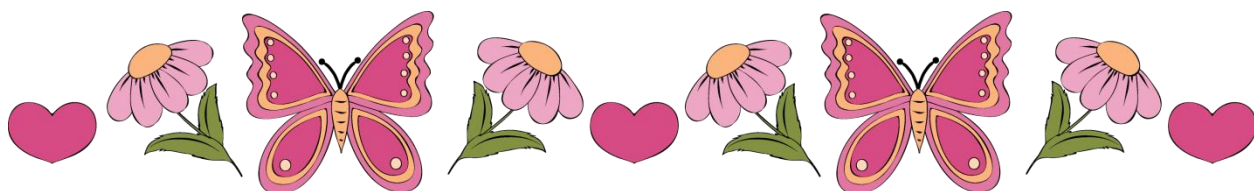
A Message from our President

I want to quilt. I really, really want to spend time with my sewing machine. I want to fondle my fabric. However...I have ripped the carpet out of my studio and am laying tile on the floor. When it is done it will be wonderful but until then my stash is all piled in a corner except for the part that is piled in another corner. I can get to my sewing machine and I do have a couple projects laying on the cutting table. I could sew but I know I will be happier when the tiling is done. So for now, no sewing or cutting or quilting for me. It's kind of like "no dessert until you finish your dinner"; I feel like I need to finish the floor before I can enjoy my favorite thing. So, everyday I try to lay at least two boxes of tile. Have 7 boxes of tile laid, only 18 or so to go!

I continue to be impressed by the giving nature of our membership. We have created a huge number of donation quilts and often get thank you notes from those who have received them. You will all be blessed by your generosity. And now we have added another donation opportunity. "One Good Meal", a group that provides meals to shut-ins in Lee's Summit, is excited to receive quilted placemats from us. Just take one of the orphan blocks you have laying around, add borders to two sides to create a rectangle, quilt and bind and you have a placemat that will brighten someone's day.

Oh, just in case you were wondering, I had a wonderful time at my quilt reunion. Quilt friends are the best friends.

Blessings, *Pam*



UPCOMING EVENTS

June 11: Jeanne Poore

Border to Border

\$5.00 guest fee for program

June 18: Bee – at the Duck Pond

9am to 4pm

June 21: Bus Trip to Wichita, KS Quilt Show

July 9: Ruth Powers

Creativity: Where do the ideas come from?

\$5.00 guest fee for program

Paper piecing workshop - Leaves - (special just for us!) - \$20.00 + 7.00 for pattern

July 16: Bee – at the Duck Pond

9am to 4pm

August 13: Ronnie Elmore

Log Cabin Tales

\$5.00 guest fee for program

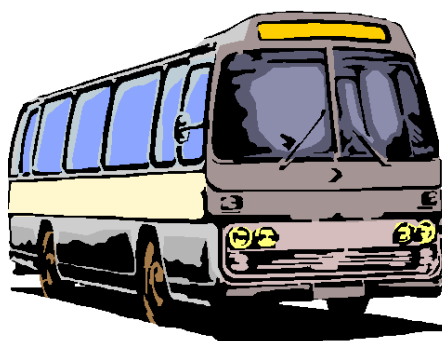
ABOUT THE BEE.....

Georgene Jurgensen is our Bee Keeper.
The Bee is the 3rd Monday of the month.

The next Bee is June 18th.

A reminder from the bee keeper.....Monday June 18 at the Raintree Subdivision clubhouse will have a quilt show working day. Bring your machine and help to make some cute aprons to wear at the quilt show. Or, bring your own projects to work on. Lots of table space and room to spread out and enjoy. Bring your lunch or there are several "take out" restaurants nearby. Come for an hour or all day.

Directions: From the intersection of Hwy 291 and Hwy 150, go west on Hwy 150 to the first light. This is Raintree Blvd. Turn south on Raintree following the road until you reach the church. Turn right on Cole Younger about 2 blocks on the left is the duck pond clubhouse. Unload in the front, park on the street. There are no steps and easy entrance for machines.



Bus Trip - Common Threads Quilt Show

On Thursday, June 21, 2012 our guild will be taking a bus trip to Wichita, Kansas to enjoy their quilt show, do some shopping and have a great time. At the time of this writing there are **6 seats available** for the trip. The quilt show promises to be very exciting with over 500 spectacular quilts to view. There will be an exhibit of their living Founder's first and latest quilts as they are celebrating their 30th anniversary. There will be quilts made by recipients of their grant program, QOV quilts and Longarm Group quilts. One of the Hoffman Challenge Exhibits will be on display. They will be having demonstrations throughout the day. And, quilters, there will be 40-50 vendors--so bring your plastic. There will be snacks and cold drinks available on the bus. We will have some prizes. Each of you will receive a goodie bag from the Wichita quilt guild. Lunch facilities are available on site at the show. We will stop for dinner on the way home. The bus will be **leaving at 6:30 a.m.** from the Waids parking lot on Oldham Road. Show hours are 10:00 a.m. to 5:00 p.m. We should return around 9:30 p.m. Please join us for this fun day. If you have questions or to make your reservation, call Sheryl Murray, 537-5588.

2012 QUILT SHOW FEATURE QUILTER – Jane Kennedy

Jane Kennedy is the 2012 Lee's Summit quilt show feature quilter. Jane follows a tradition of outstanding quilters among guild members. Everyone is sure to enjoy visiting with Jane and seeing her incredible work.

Jane has worked in several mediums of art, including pen and ink and watercolors. She began quilting in 1992. Her quilts have been part of shows and competitions on local, state, national and international levels. Her work has hung in AQS shows in Paducah, Kentucky; Nashville, Tennessee and Des Moines, Iowa. They have also been shown at Quilt Odyssey in Hershey, Pennsylvania; Road to California in Ontario, California; several Mancuso sponsored shows and IQA Festival in Houston, Texas.

In 2005 Jane was asked by the Belmond Area Arts Council in Belmond, Iowa to hang her quilts for a two-month single artist show at the Jenison-Meacham Museum. One of her paintings hangs in their permanent art collection.

Jane's quilts have also been featured in magazines in *Quilting Today*, *Traditional Quiltworks*, *\$100,000 Quilting Challenge 2006*, *American Quilter*, *Quilters' Newsletter*, and *Love of Quilting*.

Jane authored the book *Winter Trees* in 2009. It walks one step-by-step through her shattered landscape technique. She is a quilting teacher and lecturer, as well.

QUILT SHOW LOCATION

We are pleased to announce a new location within the Woods Chapel United Methodist Church for the 2012 quilt show.

The quilt show is planned for the Worship Center, parlor, and coffee bar area that is the new addition of the church. Construction complete and the facility is wonderful!

This area will provide more space and more light in a brand new surrounding. We are sure you will agree with us that this will be a beautiful setting for our quilt show. We sincerely appreciate the willingness of the church to allow us to use this space.

QUILT SHOW BED TURNING

Last year's Bed Turning was a success. It's time to think about your antique quilts that are at least 50 years old and/or baby quilts 20 years old. Entry forms will be available at the monthly guild meetings. Fill out and return to Pat Wheeler by October 8, 2012.

QUILT SHOW SILENT AUCTION

Silent Auction committee is asking for your help. We are in need of miniature wall hangings 12" in size, tablerunners 17" x 36" in size, tabletoppers 36" square or round.

We are doing a holiday theme, which can be any holiday from January until December. We will start collecting at the August Guild meeting and the last date that we will be accepting will be the October Guild meeting.

CATEGORIES FOR THE 2012 QUILT SHOW

The Quilt Show Committee has announced the Viewers' Choice Categories for the 2012 show. It's not too soon to start sewing. Registration will be available online or at the next meeting.

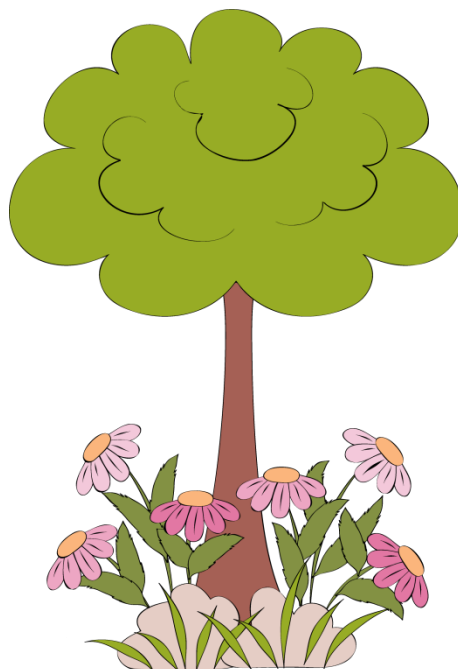
- 1). **PIECED** - Size divisions will be determined by the registration committee.
- 2). **APPLIQUE**
 Hand
 Machine
- 3). **EMBROIDERY**
 Hand or machine
- 4). **GROUP QUILTS** - The quilt must be owned by a guild member. One or more guild members must have participated in the making of the quilt top.
- 5). **ART**
 Original design or commercial pattern
- 6). **WEARABLES AND FASHION ACCESSORIES** - Includes garments, totes and purses.
- 7). **BEST IN SHOW**

Register your items for the quilt show online. Go to our blog <http://lsqg.blogspot.com/> and click on "2012 Quilt Show – Nov. 2 and 3" on the right hand side. Then you will be on the page that you can register your items. You will need to scroll down the page just a bit until you see "LSQG members ---- -- register your quilts for the show [here](#)."

If you don't have internet, you can get a paper copy of the registration form from Diane Cox.

QUILT SHOW COMMITTEE

The committee will meet again on the first Monday, June 4, at 11:00 AM, at the Duck Pond at Raintree Lake. Committee members come ready to report on the status of your committee's work and any finalized plans.



Lee's Summit Quilters Guild
Officer Nominees for 2012-2013
Election July 9, 2012
President – Donna Bland
Vice-presidents, 2013-2014 – Georgia Stull and Jenifer Dick
Recording Secretary – Janie Wagner
Correspondence Secretary – Diana Walden
Treasurer – Betty Willeke
Ways and Means – Georgene Jurgensen
Historian – Janice Crance
Newsletter – Diane Cox
Quilt Show – 2013 – Elaine Boten and Judy Sewell
Quilt Show – 2014 – Becky Kempf and Cheryl Gross
Previously Elected:
Vice-presidents, 2012-2013 – Sharon Neuer and Georgia Stull
Quilt Show 2012 – Elaine Boten and Judy Sewell

Lee's Summit Quilters' Guild Minutes of the Meeting of the General Membership, May 14, 2012

The regular meeting of the Lee's Summit Quilters' Guild was called to order by President Pam Dooley at 9:00 a.m. on May 7, 2012 at Woods Chapel United Methodist Church with 102 members and two guests present.

The minutes for the April guild meeting were approved as published. The treasurer's report for April was approved and submitted for audit.

Old Business: There was no old business.

New Business: Pam Dooley reminded us about the Lee's Summit Medical Center Health Fair on June 2nd from 10:00 a.m. until 2:00 p.m. The health fair will exhibit some of our charity quilts.

One Good Meal is a charity which delivers meals to shut-ins. This charity would love to have any placemats we can make from our leftover orphan blocks. The blocks should not be too much work because all they would need is to be framed in order to be placemat size.

Photo updates for our directory have been postponed from May until our June meeting.

Quilt Market's trade show is in Kansas City this week from May 18th until May 20th in the Kansas City Convention Center.

MQS will have its last show in the greater Kansas City in the foreseeable future on May 16th – 19th in Overland Park. The show is open to anyone, even those who just want to look.

The Kansas City Star is holding an exhibition of 150 quilts made from patterns appearing in *The Star's* quilting books from this Wednesday until Sunday. The exhibition is in the Press Pavilion at 16th and McGee in downtown Kansas City.

Jane Campbell is having a fabric yard sale on June 1st and June 2nd.

Jane Miller has a 16" x 20" rug hooking frame for sale for \$50.

Pam Dooley showed her New Favorite Thing. Initially it was surprising to learn that this is a nose hair clipper, but it turns out the nose hair clipper is a fantastic seam ripper.

Guild shirts were still on sale for \$38 each (\$40 for size XXL). The guild still has cookbooks available for \$10 each.

Donna Bland announced that next month we might meet in the new Worship Center. If so, please sit in the front and center parts so that no one feels lost. If attendance is light during a meeting in the lecture room, we should probably follow the same procedure.

Today's visitors were Dorothy Owens and Christopher Crance. Our two new members were Cindy McGarry and Christine Pembroke. Welcome to you all!

Committee Reports:

Programs: A big thank you goes to Margaret Swanson for hosting this month's speaker, Annette Ornelas.

June's program will be "Border to Border" and given by Jeanne Poore.

July's program will be by Ruth Powers of Carbondale, KS. Ruth is known for her "Third Weekend in October" pattern. Ruth will also present a special half-day workshop just for the guild after the program. She will have two patterns for us to choose from. The workshop costs \$20 and each pattern costs \$7.

Sharon Neuer announced that our guild and the guild in Blue Valley, Kansas will have quilts shows on the same weekend. The plan is to combine both guild's publicity (and save money) by advertising the "Hop Across the State Line from the Valley to the Summit."

Donation Quilts: Margaret Swanson and Donna Bland received a wonderful thank-you note for the quilts the guild gave to the Cancer Center.

Newsletter: The guild is encouraging us to read the newsletter (in color!) on our blog. If you still need a hard copy of the newsletter, please sign up on the sheet Jan Lally has at the Membership Table.

Quilt Show 2012: Don't forget that the Quilt Show will be on November 2nd and November 3rd. Prize Patrol chair Georgene Jurgensen announced that the Quilt Show will have two opportunity baskets. She asked that each guild member donate one fat quarter for the two baskets. Bed Turning chair Pat Weaver has applications for entering quilts. Silent Auction chair Judy Rick needs small items 12" to 25" as well as table runners 7" x 36" with a holiday theme. Judy would like 30 to 40 items and asks that any item that you donate come with a piece of paper with your name on it attached to the item. Peggy Patterson announced that this year's Featured Quilter will be Jane Kennedy, our own nationally-known artist.

Winter Retreat 2013: There are still a limited number of places left. The estimated total cost will be between \$250 and \$275. (This fee also includes wonderful door prizes for all participants.)

Spring Fling 2012: Lauren Bartelt has arranged a free-sew day at the church for the guild on Monday, May 21st from 9 a.m. until 4 p.m. Attendees may work on either their own projects or make things for Boutique. Lauren asks each attending guild member to bring either a salad, bread, or a dessert for the potluck lunch. Also, Spring Fling will have door prizes!

Bus Trip: Sheryl Murray has organized a guild bus trip to the Common Threads Quilt Show in Wichita, KS on June 21st. There will be a minimum of 500 quilts to admire, demonstrations, and 40 – 50 vendors. We would leave from the Waid's parking lot on Oldham Parkway at 6:30 a.m. (so please arrive at the parking lot by 6:15 a.m.) and return to the parking lot around 9:00 – 9:30 p.m. Lunch is available at the show, or you can bring your own. On the way back, we will stop somewhere for a quick dinner. The trip costs \$33 and the ticket for the show costs \$10. There are only seven spaces still available on the bus, so if you want to participate, please give your check for \$43 to Sheryl as soon as possible.

Guild Projects: Nancy Solsberg reminded those who participate in the 2-1/2" strip swap to please prewash their strips and fold each strip individually. You can swap no months, some months, or all months as you wish. Remember to bring twelve width-of-fabric strips in a plastic bag labeled with your name. June's color is blue.

This month's completed Round Tuit projects were made by: Jan Campbell, who finished a quilt using the method Diane Cox showed us to make the binding look as though piping is part of it; Jeane Weiss, who made a tablecloth for her neighbor out of the neighbor's children's old clothes; Judy Sewell, who quilted David Taylor's hummingbird project and completed a baby quilt; and Jane Miller,

who finished a pillow project she had bought several years ago on one of our bus trips. Next month's lucky Round Tuit recipients are Nancy McWilliams, Lucy Grimes, Jan Lally, and Jeanie Watson. Also, Nancy Solsberg still has a few sets of table risers for sale for \$10 each.

Door Prizes: *Quilts of Thimble Creek* book—Carole Lindgren; *Grandma's Best Quilt Blocks* book; Moda scrap bag—Terri Budzinski; a fat quarter bundle—Jan Hoffman; a fat quarter bundle—Karen Nordsieck; and quilt hang ups—Ann Roe.

Show and Tell: Lora Meadows—Thimbleberries 2011 Border Blast quilt; Pat Wheeler—an appliquéd bargello quilt; Jane Kenney—a tool bag; Betty Willeke—a tote bag and a purse; Mary Ann Holdmeyer—purses; Janice Campbell—a carnation One-Block Wonder quilt; Sheryl Murray—two “My Garden Window” quilts; Anita Bridges—a jacket, an iron caddy, bibs, and a monkey crib quilt; Jolene Johnson—“Bunny Baby” quilt; Martha Lear—“Endless Summer” quilt; Peg Elkins; Jane Miller—a black/white quilt and table runners; Christine Pembroke—Star quilt; and Lauren Bartelt—three baby quilts.

The meeting was adjourned at approximately 10:20 a.m. for Southwind Designs' Annette Ornelas's interesting program on Peeled-Back Appliqué. Annette will hold a half-day workshop this afternoon and an all-day workshop tomorrow.

Respectfully submitted,

Mary Lou Pick, Recording Secretary

Lee's Summit Quilters' Guild Receipts and Disbursements – May 2012

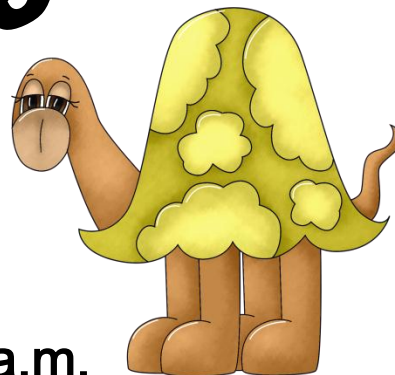
Receipts	Rent		\$ 150.00
	Programs		\$ 325.00
	Shirts		\$ 344.00
	Cook Books		\$ 20.00
	QS Vendors		\$ 700.00
	Tall Oaks		\$ 100.00
	Bus trip		\$ 551.00
	Badges		\$ 35.00
	Membership		\$ 45.00
			\$ 2,270.00
Disbursements	General Fund		\$ 282.75
	Tall Oaks		\$ 467.17
	QS Boutique		\$ 30.80
	Badges		\$ 60.32
	Programs		\$ 1,660.39
	Newsletter		\$ 24.75
			\$ 2,526.18
Net Receipts & Disbursements			\$ (256.18)
Balance for Tall Oaks			\$ 2,596.46
Balance after Tall Oaks			\$ 17,869.03
Balance in Check book			\$ 20,465.49

Lee's Summit Quilters' Guild
Diane Cox, Newsletter Coordinator
9617 Windsor Drive
Lee's Summit, Missouri 64086

First Class



Next Meeting



June 11, 2012 9:00 a.m.

Remember your show and tell item(s) And your name badge
Woods Chapel United Methodist Church, 4725 NE Lakewood Way, Lee's Summit, MO 64064

You can find the Lee's Summit Quilters' Guild website at:
<http://lsqg.blogspot.com/>