

L.S.Q. G. NEWSLETTER

Lee's Summit Quilter's Guild, established 1983

A Message from our President

After our half day of Spring it appears we are now into Summer. I am enjoying having the windows open but some days it gets a little steamy. So, I head to the lower level of the house which happens to be where my sewing room is. Hope you are finding time to do what you love.

The quilt show is only a little over 5 months away. Time to finish up all the items you want to enter in the show & also make something for the silent auction &/or the boutique. Nancy Solsberg is already accepting items for the boutique with the exception of books & magazine. So as soon as you have some boutique items completed get them to Nancy at either the Bee or the guild meeting so she can start getting things priced. For the past few years we have exceeded the previous year for money raised from the boutique. Let's see if we can keep that trend going. Remember, the money we make from our quilt show is what makes it possible for us to have the outstanding programs we have had this past year. I have heard rumors of programs to come & trust me you will be amazed at what our program chairs have in store for the future.

Happy Quilting,
Donna



June 10: Theresa Ward and Sharon Lorfing (Wing Designs)

Program: All About Mystery Quilts

June 17: Bee – at The Duck Pond Building in Raintree Lake 9am-4pm

July 8: Pat Speth (Nickel Quilts)

Program: Five Inch is a Cinch

July 9 (Tues) all Day Workshop

July 15: Bee – at The Duck Pond Building in Raintree Lake 9am-4pm

August 12: Cleo Mounday (Cleo's Design)

Program: Finding Color in Your World

Workshop: Paint by Number Fused Flowers

ABOUT THE BEE.....

The Bee is the 3rd Monday of the month.

From our Bee Keeper, Elly Gray: June 17th Bee is at the Raintree Duck Pond Building. The address for the Duck Pond Building is – 100 SE Cole Younger Blvd, Lee's Summit, MO 64082. Happy Sewing!



Lee's Summit Quilters Guild Minutes of the Meeting of the General Membership, May 13, 2013

President Donna Bland called the meeting to order at 9:03 am. Minutes of the April 8, 2013 were approved as published.

Old business: Nothing

New Business: Nothing

Committee Reports:

Corresponding Secretary: Diana Walden reported she had sent a card to Mary Jo Cartwright, who had open heart surgery. She also thanked all those who sent cards after her Mother's passing.

Library: Joy O'Kane reported she has purchased 2 DVD's, one T-Shirt Quilt in a Day and How Charming, Quilt in a Day. She also reported they have cleaned out the library cart and those books that have not been checked out in years will be offered to the members on the free table.

Programs: Sharon Neuer and Georgia Stull reported today's program, Barbara Jones from BJ Patterns and Designs will be presenting the program called "A Pattern Makers Journey" with a workshop to follow this afternoon.

Bee Keeper: Elly Gray reported the bee will be held May 20th at the Duck Pond.

Donation Quilts: Jean Bales stated there would be charity quilt sewing after the meeting today. She also stated there were 20 quilts turned in last month, and this month we have over 20 already! It was also mentioned the Cancer Center on Noland Rd is very low on quilts.

Guild Projects: Nancy Solsberg stated the Nickel Charm project is coming along very nicely. If you have not already, pick up your charm package today. The round tuits were next. Roberta Brown, Mary Lou Pick and Carol Bliss showed their finished projects, A UFO show and tell by Judy Sewell, a flannel quilt, Racene Bolin, a purple weather vane, JoAnn Hudson, Bear Paw, , Martha Lear, Round the world medallion, Elaine Boten, "Sewing things" embroidery, Marilyn Ramsey, Autumn Leaves, Nancy Lobsinger, Katie's Quilt, Karen Nordseck, heirloom pillow cases, Sheryl Murray, MU coat, Debbie Smith, Bali Star BOM, Ann Roe, sun bonnet, Cheryl Gross, twilling pillow, Becky Kempf, flamingo donation quilt, Nancy Solsberg, a Safari quilt and Lauren Bartelt, baby rag quilt. Winner of the drawing was Nancy Lobsinger.

Bus Trip: Sheryl Murray reported the bus trip on May 20th is full with three on the waiting list. It will be a shop hop to Topeka (two shops), shop in Manhattan (lunch on your own), Holton Quilt shop and one in Leavenworth. The bus will leave Lee Summit (former Waids parking lot) at 7:30 am and return to the parking lot around 6:15 pm. There will be snacks and cold drinks on the bus. She also will

check into a bus trip to Des Moines in October if there is enough interest. By a show of hands, there is, so she will pursue checking the possibilities.

Quilt Show: Elaine Boten and Judy Sewell. The quilt show is set for November 1st and 2nd at WCUMC. Diane Cox reported the registration forms, both hard copy and on line are available. Cut-off will be Sept 15th. The categories will be PIECED, this will be further sub-divided into small, medium, large and extra large, HAND APPLIQUE, MACHINE APPLIQUE, HAND EMBROIDERY, MACHINE EMBROIDERY, GROUP ART and SPECIALITY ITEMS. Diana Walden indicated they will have demonstrations at the show. She is looking for a member to demonstrate twilling. Nancy Solsberg is collecting items for the boutique except for the magazines. Silent Auction needs table runners, toppers, place mats, purses and totes. They will begin collecting in August.

Attendance: Jan Lally indicated there were 112 members in attendance and four guests, Sherry Gilbert, Greenwood, Mo, Christy Nyquist, Lees Summit, June Hayes, Belton and Janice Crance's mother, Maedora Larson. Sherry Gilbert joined the guild.

Show and Tell: The April minutes incorrectly stated a Charlene Vaughn showed a quilt. Should have said Earlene Vaughn. Showing this month include: Pam Dooley, Airplane quilt and love quilt, Anita Bridges, Expandable bag, Terri Budzinski, I Spy quilt, Mary Eubank, Candy Store quilt, Jill Dean, Floating Star quilt and Garden wall hanging, Karen Rose, Kim and Drew's graduation quilts, Lois Erwin, outhouse four patch, Barnyard, Meet me in Paris, a baby quilt and a garden quilt, Dorothy Dinwiddie, Alaskan Bird appliqué, Maxine Howard, Let it Shine pieced quilt, Pam Thomason, Little Monster baby quilt and Owl baby quilt, Judy Kane, Class wall hanging, graduation quilt, Sharon Neuer, graduation quilt-Simply woven, Betty Tucker, Doggie baby quilt, Judy Sewell, Cat wall hanging, Sue Williams, Dashing Thru the Snow, and a Tall Oaks tee shirt quilt quilted by Donna Bland with oak leaves and Beth Kurvaza, hand dyed charity quilts.

Door Prizes: Judy Kane, magnetic pin cushion and Moda bake shop kit, Jenifer Dick, magnetic pin cushion and Moda bake shop kit, Vicki Ibarra, also a magnetic pin cushion and Moda bake shop kit, Carla McFarland, rotary cutter and Moda bake shop kit, Denice Kilmer, machine needles, seam ripper and Moda bake shop kit, Sue Williams, tea towels and Moda bake shop kit, Donna Rotzler, tea towels and Moda bake shop kit and Gayle Hawley, Hoot pattern from B J Designs and Patterns.

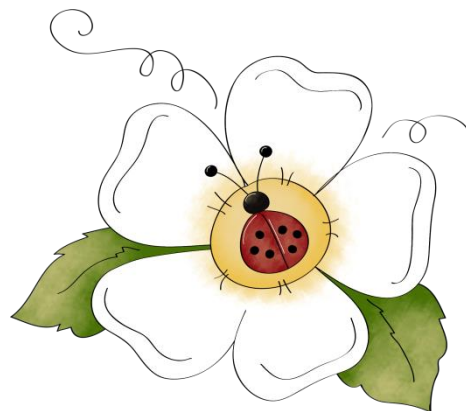
Pam Dooley announced the slate of officers for 2013/2014 as follows:

President-Donna Bland, Vice President- 2013/2014-Georgia Stull & Jenifer Dick, Vice President- 2014/2015-Jenifer Dick & Joan Gardner, Recording Secretary-Terri Budzinski, Corresponding Secretary-Diana Walden, Treasurer-Elly Gray, Newsletter-Diane Cox, Historian-Janice Crance, Ways & Means-Carla McFarland, Quilt Show 2014-Becky Kempf & Cheryl Gross, Quilt Show 2015-Peggy Patterson & Pam Dooley

Business meeting adjourned at 10:40 am

Business meeting was followed by Barbara Jones of B J Designs and Patterns.

Respectfully Submitted,
Janie Wagner, Recording Secretary



2013 LSQG Quilt Show – Nov 1 & 2

Committee Meeting

The Quilt Show 2013 Committee will meet on Monday, June 3, 2013, at 10:00 A.M. at the Duck Pond at Raintree Lake. Members come ready to report on the status of your committee's work and any finalized plans.

Prize Committee

WANTED: A Singer Featherweight 221. The Quilt Show Prize committee is looking to purchase or a donation of a featherweight sewing machine to use as a prize for the Quilt Show. Tickets will be sold and the prize will be drawn at the closing of the show Nov. 2. If you know of a machine or have one, please call Georgene Jurgensen 816 591-0251. All funds from the quilt show go to our program committee to continue to bring the best artists and classes to our guild.

Categories

1). PIECED

Size divisions will be determined by the registration committee based on the number of entries. There could be small, medium, large and extra large divisions.

2). HAND APPLIQUE

3). MACHINE APPLIQUE

4). HAND EMBROIDERY

5). MACHINE EMBROIDERY

6). GROUP QUILT

The quilt must be owned by a guild member. One or more guild members must have participated in the making of the quilt top.

7). ART QUILT

Original design or commercial pattern

8). SPECIALITY ITEMS

This category includes wearables, totes, purses, home décor, and aprons.

9). BEST IN SHOW

Silent Auction

The Silent Auction Committee is looking forward to another great year from our members with 30 to 40 items submitted to the auction. Items will be accepted beginning in August. It is not too soon to begin your project!

Any theme is acceptable, but keep in mind the holidays around Quilt Show time--Thanksgiving, Christmas, New Years'. Suggested projects include:

Miniatures or wall hangings sized from 12 inches to 25 inches.

Table runners approximately 17 inches wide to 36 inches long.

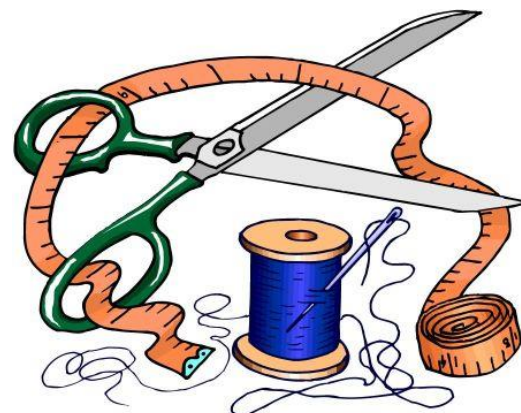
Table toppers up to 36 inches round or square.

Place mats, Purses or tote bags, Baskets

Boutique:

If you have any of these extra items laying around, please consider donating them to the boutique.

- ~ Larger beads
- ~ Leftover 1-1/2" strips and 2-1/2" or larger, but not smaller than 1-1/2"
- ~ Bright colored fabrics for kids projects
- ~ Bright colors in medium size rick rack
- ~ 1/4 elastic
- ~ suspender clips



Drop these items off at the Guild Projects table where Nancy Solsberg is seated. (Back of our meeting room next to the library table)

Items for the boutique (except books and magazines) can be brought to me at any time. I will store these items and have them ready for the Quilt Show.

Bring in your books and magazines on the day of Quilt Show set-up (Oct 31).

Thank you,

Nancy Solsberg

(if you have any questions please call me at 816-517-1627 or email me at nansols@comcast.net)

Guild Projects

NICKEL SWAP UP-DATE:

The **color for May is purple.**

Your May nickel charms need to be to Nancy Solsberg by June 1st.

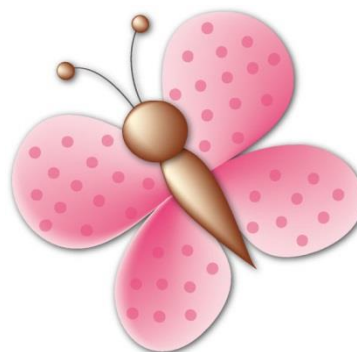
The **color for June is orange.**

Lee's Summit Quilters' Guild
Diane Cox, Newsletter Coordinator
9617 Windsor Drive
Lee's Summit, Missouri 64086

First Class



Next Meeting



June 10, 2013 9:00 a.m.

There will be a sewing session after the meeting to work on donation items.

Remember your show and tell item(s) And your name badge

Woods Chapel United Methodist Church, 4725 NE Lakewood Way, Lee's Summit, MO 64064

You can find the Lee's Summit Quilters' Guild website at: <http://lsqg.blogspot.com/>