

A Message from our President

Spring is here. Sometimes it isn't as obvious because of the crazy weather we have been having. I know I am ready for some nice weather where I can be outside or at least have the windows open to let the outside in. Then we have the option of sewing inside or out on the deck/patio.

I had a great time at the Spring Fling on the 15th. It was good to see so many in attendance & look at all the projects everyone was working on. Several of us worked on pineapple blocks made from the book Trash to Treasures that the guild offered along with the pineapple ruler to trim the blocks up. I want to publicly thank Peggy Patterson for a fantastic job in organizing this event.

Looking forward we have our bus trip coming up on May 20th. Sheryl Murray is in charge of this & has set up a fun day for all attending.

The first installment for next years' retreat at Tall Oaks was due at the April meeting. We currently have 25 signed up for the first session which is March 21st through the 24th & 22 signed up for the second session which is March 24th through the 27th. Our maximum capacity is 32 so if you are interested please contact me or Diane Cox to reserve your spot. The first payment is \$50 & we will have a \$70. payment due at the July, October & January meetings. It is a great opportunity to get together for extended fellowship with other guild members & get to know them better.

Happy Quilting,
Donna



May 13: Barbara Jones (BJ Patterns and Designs)

Program: A Pattern Maker's Journey

Workshop: Techniques for a fun, fusible wallhanging (\$30.00)

www.bjdesignsandpatterns.com

May 20: Bus Trip – See article on pg. 4

Bee – at The Duck Pond Building in Raintree Lake 9am-4pm

June 10: Theresa Ward and Sharon Lorfing (Wing Designs)

Program: All About Mystery Quilts

June 17: Bee – at The Duck Pond Building in Raintree Lake 9am-4pm

July 8: Pat Speth (Nickel Quilts)

Program: Five Inch is a Cinch

July 9 (Tues) all Day Workshop

ABOUT THE BEE.....

The Bee is the 3rd Monday of the month.

From our Bee Keeper, Elly Gray: I'm pleased to tell you the Bee on **May 20th** is back at the Raintree Duck Pond Building versus at the Raintree Clubhouse. The address for the Duck Pond Building is – 100 SE Cole Younger Blvd, Lee's Summit, MO 64082. Happy Sewing!



Lee's Summit Quilters Guild Minutes of the Meeting of the General Membership, April 8, 2013

President Donna Bland called the meeting to order at 9:02 am. Minutes of the March 11, 2013 were approved as published.

Old Business: Nothing

New Business: Donna stated she needed two volunteers for the nominating committee. Sharon Neuer and Pam Dooley volunteered and will start the process in May. Please really consider the position if you are asked.

Retreat was a huge success with 23 members at the first session and 32 at the second. If you would like more information about the retreat, talk to a member who attended one of the sessions.

Reservations for next year can be made now with a \$50 down payment. Additional payments of \$70 will be due in July, Oct and January. 2014. This will pretty much pay for the retreat depending on whether costs from Tall Oaks increase or not. The week-end retreat is March 21 - 24th and the week-day retreat is March 24 - 27th. Payment includes lodging and eight meals.

Committee Reports:

Corresponding Secretary: Donna reported Diana Walden's mother passed away. Cards have been sent to Elly Gray for her husband Ron's surgery, Becky Camacho on the passing of her husband and Mary Jo Cartwright who had open heart surgery.

Library: Joy O'Kane reported she has received DVD's from Candy Hargrove on some of her patterns she presented at the program she did for the guild, DVD's demonstrating the Deb Tucker ruler, and a "Trash to Treasure" pineapple ruler book.

Programs: Sharon Neuer and Georgia Stull reported in May, Barbara Jones from BJ Patterns and Designs will be presenting the program called "A Pattern Makers Journey" with a workshop to follow in the afternoon. Cost for the workshop is \$30 plus kit and pattern. In July, Pat Speth will present a program on Nickel Quilts with an all day workshop on July 9th. The cost for the workshop is \$50

Bee Keeper: Elly Gray reported Spring Fling is April 15th and the May bee may be located back at the duck pond. Watch the newsletter for location.

Donation Quilts: Jean Bales stated there would be charity quilt sewing after the meeting today. She also has two projects that need binding. 84 quilts have been donated so far this year. She has 30 more that need finishing she will bring next meeting. Cancer quilts need to be at least 45" x 60" and baby quilts 35" x 40".

Guild Projects: Nancy Solsberg started with the round tufts. Joan Gardner showed several items for the sewing machine sewing area, an American Jane fabric quilt and a Pineapple Treasure quilt. Mary Mashburn completed an apron and pot holders that she will be donating to the boutique and Sharon Neuer showed her small art one block wonder quilt and another small quilt she made in the March guild workshop. Roberta Brown was not able to complete a project and Mary Nelson was

absent. Next month, Mary Lou Pick, Sharon Stella, Nancy Solsberg and Carol Bliss were the recipients of the round tufts.

A UFO show and tell were as follows: Elaine Boten, a charming Trio table runner. Cheryl Gross, Advent calendar, Peggy Patterson, Garden quilt, Racene Bolin, Presidents quilt, Debbie Smith, QFH #9, Martha Lear, #3, Row by Row, Jean Brown, #3, Children's animal quilt, Marylou Cramsey, Around the Neighborhood, Vicki Ibarra, Expanding Carpenter Star, Sheryl Murray, Tulip Bells and Georgia Stull, Sock Monkey wholecloth quilt. The door prize was won by Racene Bolin who chose the book, Amazing Nickel Quilts.

Spring Fling: Peggy Patterson indicated the Spring Fling will be held on April 15th, in the lecture hall upstairs. A signup sheet for lunch is available during break and after the meeting.

Sheryl Murray reported she has planned a bus trip for May 20th. It will be a shop hop to Topeka (two shops), shop in Manhattan (lunch on your own), Holton Quilt shop and one in Leavenworth. The bus will leave Lee Summit (former Waids parking lot) at 7:30 am and return to the parking lot around 6:15 pm. There will be snacks and cold drinks on the bus. The cost is \$25 and a signup sheet is in the back.

Quilt Show: Elaine Boten and Judy Sewell. The quilt show is set for November 1st and 2nd at WCUMC. They will ask for volunteers to make additional 18 - 20 aprons for the volunteers working the show. The categories will be PIECED, based on number of entries, this could be further subdivided into smaller categories, HAND APPLIQUE, MACHINE APPLIQUE, HAND EMBROIDERY, MACHINE EMBROIDERY, GROUP, ART and SPECIALITY ITEMS. Registration will begin soon. Cutoff date is September 15th. Carla McFarland indicated the guidelines for silent auction items. They will begin collecting in August. Nancy Solsberg will have kits available next month to make items for the boutique.

Attendance: Margaret Swanson indicated there were 90 members in attendance and one guest, Sharon Williams from Excelsior Springs, Mo.

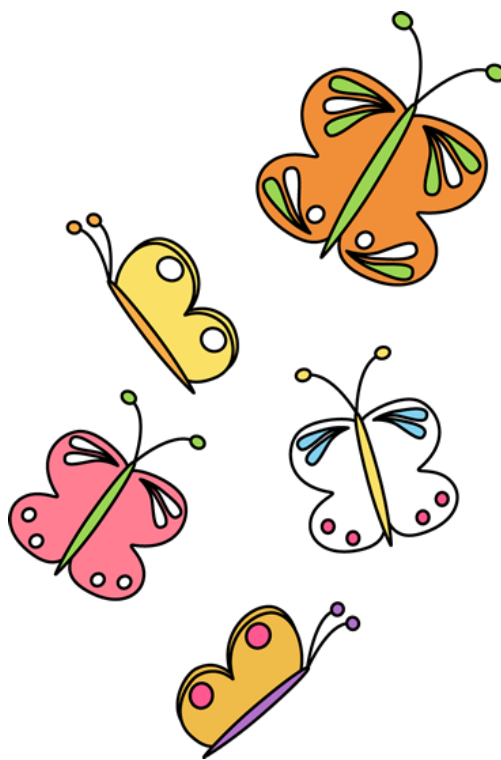
Show and Tell: Included Racene Bolin, raffle quilt for Calico Quilters, Jean Brown, Green stars in a box, Paula Gilmore, Windmills batik, Donna Rotzler, Chubby Chix, Joyce Anderson, Bettina quilt, Elaine Boten, Paducah tote and insert, Arizona purse and Christmas stocking wall hanging, Judy Sewell, Paducah tote and insert and a clutter bag, Maxine Howard, K>T> Quilt, Terri Budzinski, baby quilt and baby runner, Vicki Ibarra, 2 cowboy quilts, Charlene Vaughn, K C Star appliqué quilt, Bonnie Rexroad, Dashing Thru the Snow, Java wall hanging, table cover and apron, Vickie Gordon, 4 table toppers, basket, Mary Ann Holdemeyer, paper dolls, and Juanita Brents, bunny quilt.

Door Prizes: Debbie Smith, Zippy Strippy pattern and fat quarters, Pennie Stafford, Lucky Stars pattern, Pat Wheeler, Sweet Nothings pattern and fat quarters, Jan Lally, Blooms for Annabelle pattern and fat quarters, Janice Crance, South Dakota Star pattern and fat quarters, Carla McFarland, Stamp pattern and fat quarters and Mary Mashburn, Labor Day Stars pattern and fat quarters.

Business meeting adjourned at 10:21 am.

Business meeting was followed by Bettina Havig who gave a program on "Cheap Tricks".

Respectfully Submitted, Janie Wagner, Recording Secretary



April 2013 Treasury Report			
Receipts:	Library	\$	20.00
	Membership	\$	60.00
	Name Badges	\$	7.00
	Special Events (Bus Trip)	\$	675.00
	Ways & Means (Cookbooks)	\$	20.00
		\$	782.00
Disbursements:	Historian	\$	22.39
	Library	\$	31.23
	Newsletter	\$	11.04
	Programs	\$	420.35
	2013 Quilt Show	\$	7.90
	Rent	\$	150.00
	Rent - Programs	\$	25.00
	Safety Deposit Box pmnt	\$	15.00
	2013 Tall Oaks - Refund	\$	150.00
	Trailer Insurance	\$	11.00
	Ways & Means	\$	350.78
		\$	1,194.69
Net Receipts & Disbursements:		\$	(412.69)
Balance in Check Book		\$	27,798.58
Balance for Tall Oaks		\$	9,571.89
LSQG Balance		\$	18,226.69

Tall Oaks Retreat 2014 dates:

1st session (weekend)
March 21 – 24 F, Sa, Su, M

2nd session (weekday)
March 24 – 27 M, Tu, W, Th

Donation Quilts

In May we will start working on the Tossed nine patch. It can be found on youtube.com Quilt in Day
<http://www.youtube.com/watch?v=LfIAmgM8yd0>

We will use 3.5 inch patches of pastel fabrics. Printed instructions and fabric will be available at the May meeting and we will stay to sew after the meeting. A few kits from last month will be ready to Quilt and fabric can be taken home for the tossed nine patch. Our guild donated one quilt to the Green Vet, five to the cancer center, and seventeen to Rachel House Pregnancy Crisis Center in April. Are we good or what!

Bus Trip

Our bus trip, scheduled for Monday, May 20, 2013, is now fully reserved. However, if you would like to have your name on a waiting list in case anyone planning to take the trip is unable to attend, I will be happy to take your name. Just give me a call at 816-537-5588. There will be snacks and cold drinks available on the bus. This bus is equipped with a restroom. We will have drawings along the way. All of the shops are excited about our coming. One is even opening up just for us on a Monday. So come prepared to see many lovely quilting ideas, supplies, fabric and patterns. The bus will be leaving promptly at 7:30 a.m. from the old Waids parking lot on Oldham Road. We should return around 6:15 p.m. If you have questions, call Sheryl Murray, 816-537-5588.



2013 LSQG Quilt Show

Committee Meeting

The Quilt Show 2013 Committee will meet on Monday, May 6, 2013, at 10:00 A.M. We hope that our meeting will be returning to the Duck Pond at Raintree Lake. If that building is not completed and ready for use, we will return to the Raintree Clubhouse. Watch for your e-mail reminder for the exact location. Members come ready to report on the status of your committee's work and any finalized plans.

Categories

The Quilt Show Committee has announced the nine Viewers' Choice Categories for the 2013 show. It's not too soon to start sewing. Registration will be available soon. Deadline is September 15.

1). PIECED

Size divisions will be determined by the registration committee based on the number of entries. There could be small, medium, large and extra large divisions.

2). HAND APPLIQUE

3). MACHINE APPLIQUE

4). HAND EMBROIDERY

5). MACHINE EMBROIDERY

6). GROUP QUILT

The quilt must be owned by a guild member. One or more guild members must have participated in the making of the quilt top.

7). ART QUILT

Original design or commercial pattern

8). SPECIALITY ITEMS

This category includes wearables, totes, purses, home décor, and aprons.

9). BEST IN SHOW

Silent Auction

The Silent Auction Committee is looking forward to another great year from our members with 30 to 40 items submitted to the auction. Items will be accepted beginning in August. It is not too soon to begin your project!

Any theme is acceptable, but keep in mind the holidays around Quilt Show time--Thanksgiving, Christmas, New Years'. Suggested projects include:

Miniatures or wall hangings sized from 12 inches to 25 inches.

Table runners approximately 17 inches wide to 36 inches long.

Table toppers up to 36 inches round or square.

Place mats

Purses or tote bags

Baskets

We appreciate your willingness to donate your items. Thanks.

Boutique:

Up-date:

I had several wonderful items turned in this past month at retreat and at the meeting: tote for iPad /small notebook and tote for Kindle/Nook; apron with matching pot holders; microwave potato bags; microwave bowl holder and microwave Smart One holders; and several mug rugs. And several sets of patterns from the newspaper [for those that like the originals from the paper].

We are in need of many more items for the boutique to be a success.

Last month the newsletter posted several links where you could go to print off patterns that Moda Bake Shop has given us permission to use. These were found and posted so you could go right to them. I downloaded the patterns to my iPad so I would have them for future use. You should be able to open the link and print the pattern off easily. For your convenience we are posting them here again:

Grocery bag dispenser: <http://www.unitednotions.com/MBS-grocery-bag-dispenser.pdf>

Bookkeeper: <http://www.unitednotions.com/MBS-bookkeeper.pdf>

Journal Covers: <http://www.unitednotions.com/MBS-journal-covers.pdf>

Car Diddy Bag: <http://www.unitednotions.com/MBS-car-diddy-bag.pdf>

Children's Personal Journal: <http://www.unitednotions.com/MBS-funky-monkey-childrens-personal-journal.pdf>

Doggie Do Bag: <http://www.unitednotions.com/MBS-doggie-do-bag.pdf>

Twisty, Twirly Girly Skirt: <http://www.unitednotions.com/MBS-twisty-twirly-girly-skirt.pdf>

Little Zipper Bag: <http://www.unitednotions.com/MBS-lil-zipper-bag.pdf>

Stroller Bag: <http://www.unitednotions.com/MBS-chic-mama-stroller-organizer.pdf>

Childs Activity Bag: <http://www.unitednotions.com/MBS-childs-activity-bag.pdf>

Baby Doll Bunting: <http://www.unitednotions.com/MBS-baby-doll-bunting.pdf>

Mini Wallet: <http://www.unitednotions.com/MBS-business-card-mini-wallet.pdf>

Cathedral Window Pincushion: <http://www.unitednotions.com/MBS-cathedral-window-pincushion.pdf>

Coupon Clutch: <http://www.unitednotions.com/MBS-coupon-clutch.pdf>

I also have a pattern for a crayon roll up. I am in need of bright colored childrens fabric as follows:

2 pieces of same fabric for outside and inside – 5" x 16 1/2"

1 piece of same fabric for tab – 1-1/2" x 3"

1 piece of coordinating fabric for pocket – 6" x 16 1/2"

Medium size rick rack [optional]

If you have leftover strips from honey buns or jelly rolls, or a jelly roll you would like to donate, please do so. They can be used in the grocery bag dispensers; journal covers; notebook covers; binder covers and several other items.

Any bright color fabrics.

I am searching for a good buy on name tag clips to use for baby bib straps [used to clip on napkins for a quick bib when out at restaurant.] Suspender clips will work for these also so if you should have any of these in your stash and would like to get rid of them, I'll take them! These would take about a 2-1/2" x 15" strip.

I am also in need of beads. Larger beads to make Stilettos out of using the wire turkey basters [those metal needle looking things that Grandma used to tress the turkey up with]. The tiny beads will not work.

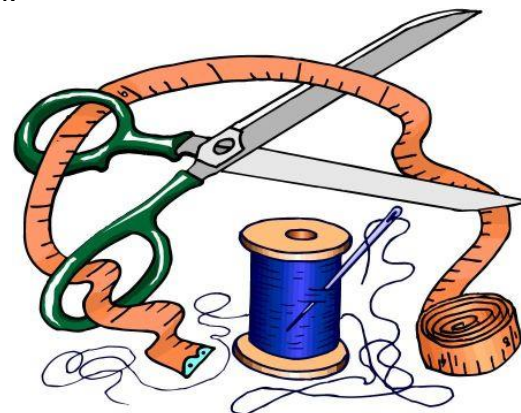
I am hoping to have kits cut and ready for our next Bee [had them at Spring Fling too] and will have some at the next meeting but I can't get kits ready until I get some donations. Kay Woody will be at the Guild Projects table [or next to it] to collect your donations at meetings. We will be asking you sign out the kits and cross your name off the list when you bring the item back completed. I know

sometimes life gets in the way of things we want to do, and things like this get forgotten so if you sign them out I can remind you after a few months that you have them.

I have a limited budget so I need your help. Here is re-cap of what is needed so far. Please consider helping.

- ~ Larger beads
- ~ Leftover 1-1/2" strips and 2-1/2" or larger, but not smaller than 1-1/2"
- ~ Bright colored fabrics for kids projects
- ~ Bright colors in medium size rick rack
- ~ ¼ elastic

Thank you, Nancy



Guild Projects

NICKEL SWAP UP-DATE:

The charm swap is going well except when I end up with that odd charm. It is wise to check them each month when you get them back. They tend to stick together and it easy to pick up 3 instead of 2. I search and go back through them until I am cross-eyed so double check me.

The color due for April is yellow. Gold is acceptable in all categories except pastels. These I must have by May 1st.

The color due in May is purple, lavender if you are doing pastels.

Please note that I do not think that there will be enough charms to do a complete project. You might want to start going through your stash and added pairs of 5" Nickel charms to the ones you are collecting.

Pat Speth will be our guest speaker in July and she is who the Nickel Charm swap has been themed around. She is also teaching a day long work shop on Tuesday, July 9th from 9 a.m. to 4 p.m. You can select any of the patterns on her web site listed under "Small Wonders". The supply list will be given to you when you sign up for the workshop. The cost of the day long work shop is \$50.00. This is the link to her work shop page. Just scroll down to small wonders and choose one of those patterns for the workshop. <http://www.patspeth.com/workshops.html>

Library

On the blog, there is an **updated** list of the current books in the libray.

Go to <http://lsqg.blogspot.com/> then click on Guild Library Book List, which is on the right hand side.

Lee's Summit Quilters' Guild
Diane Cox, Newsletter Coordinator
9617 Windsor Drive
Lee's Summit, Missouri 64086

First Class



Next Meeting



May 13, 2013 9:00 a.m.

There will be a sewing session after the meeting to work on donation items.

Remember your show and tell item(s) And your name badge

Woods Chapel United Methodist Church, 4725 NE Lakewood Way, Lee's Summit, MO 64064

You can find the Lee's Summit Quilters' Guild website at: <http://lsqg.blogspot.com/>